

Chilwell Road

Chilwell Road NET Phase Two Construction Update

8 - 22 November 2013

Although the majority of utility replacement work is now complete, and we are well into the track laying stage between the police station and Ellis Grove, phase 1 construction work is behind where we intended. Completion of the first phase has slipped into January and Chilwell Road will now open as soon after Christmas as possible.

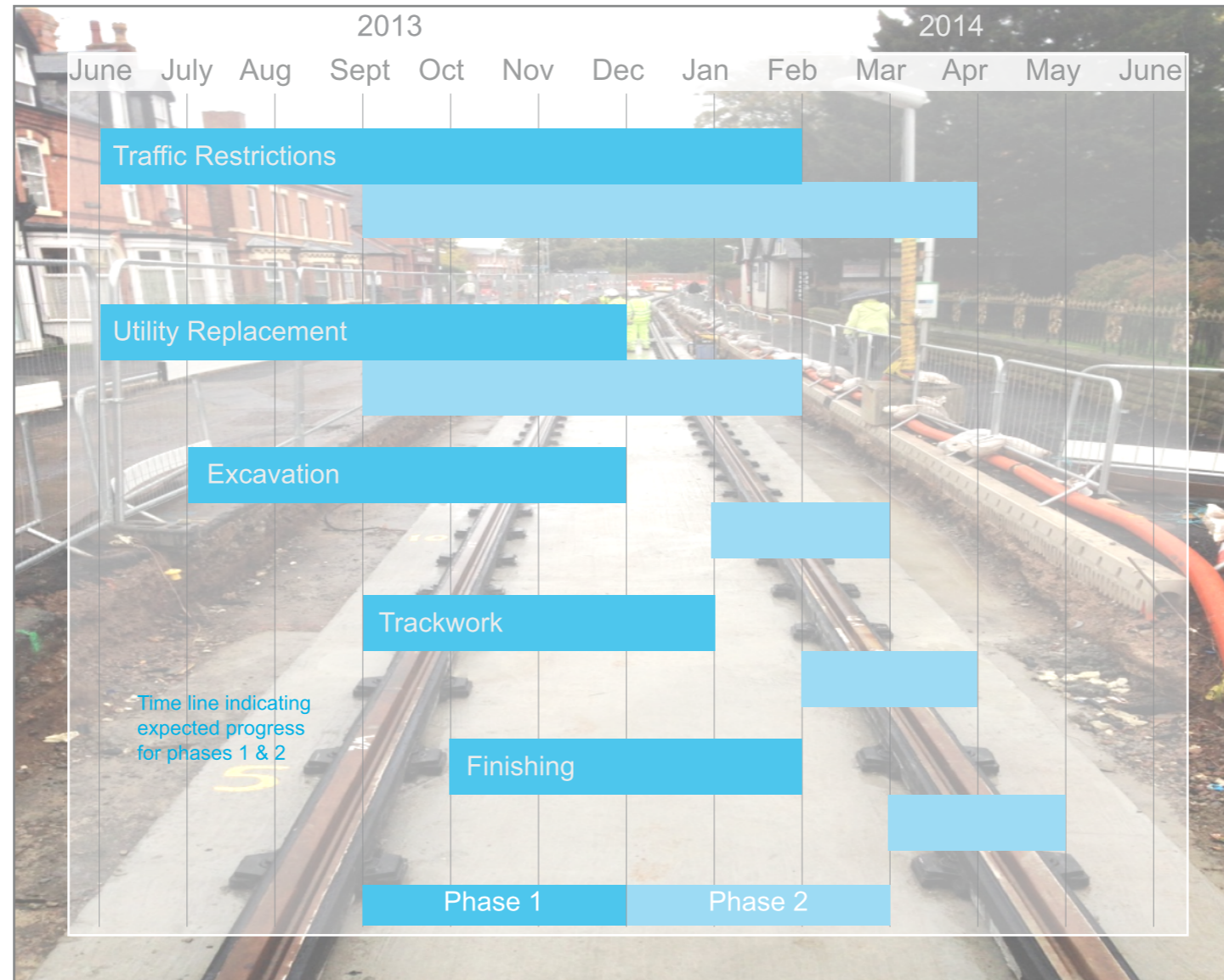
Changes to the design, scope and requirements of utility companies have played a part. Moving and replacing utilities has taken longer because ageing drainage pipes were found to be in a poorer state than expected. The difficulties of working in a confined area - both above and below ground - have been more challenging than we thought.

For the next phase we have an opportunity to progress more quickly. Most utility replacement works are already well advanced. More space means that there is an opportunity to lay both sets of tracks at the same time - with less traffic restrictions. And although we're behind now, we remain determined to complete both phases in April.

I will keep you informed as much as possible as the second phase of the construction work continues.



Jamie Missenden
Section Manager



NET hotline - 0115 9242454 for more information on NET Phase Two

or for information on the construction along Chilwell Road, please contact:

Jamie Missenden Section Manager jamie.missenden@taylorwoodrow.com

Matt Orchard Community Liaison Officer matt.orchard@taylorwoodrow.com

Ashley Jackson Communications Manager ashley.jackson@transport.alstom.com

The **Logistics Centre** on Wilmot Lane offers both residents and local businesses a delivery service for goods to homes and shops while access is limited by construction. They also provide a helpful link between the construction team and the local community.

For more information contact:

Graham Baker 07766 502120 graham.baker@daviesrobson.co.uk

Tim Lee 07799 757576 tim.lee@daviesrobson.co.uk

The tram construction along **Chilwell Road** is being carried out in two phases to help minimise disruption. Although the road is closed to through traffic this has created a pedestrianised area and has allowed access to shops to be maintained.

Phase 1 - runs from the junction of **Devonshire Avenue and Middle Street, to Ellis Grove**. Utility replacement work is complete along this stretch and trackwork is well underway.

Phase 2 - runs from **Ellis Grove to Holly Lane**. Most of the utility moving and replacement work is now complete and this will allow excavation work to start soon.

Underground utility services - such as water pipes, live electricity cables, drains, gas mains and communications cabling - have to be moved, or replaced before work on the tram can begin. Unfortunately these essential works can sometimes mean that the construction takes longer than planned. But the replacement of ageing infrastructure will bring significant long term benefits to Beeston.

A **reinforced concrete base** is constructed to provide a stable foundation on which the tram will run and pilings for the poles to carry overhead cables are installed. Track can then be laid.

Finally, footpaths on either side of the road are reinstated and walls in front of properties rebuilt, following the installation of the **overhead cables**.

The road surface is then replaced ready for trial running in advance of a full tram service operating at the **end of 2014**.

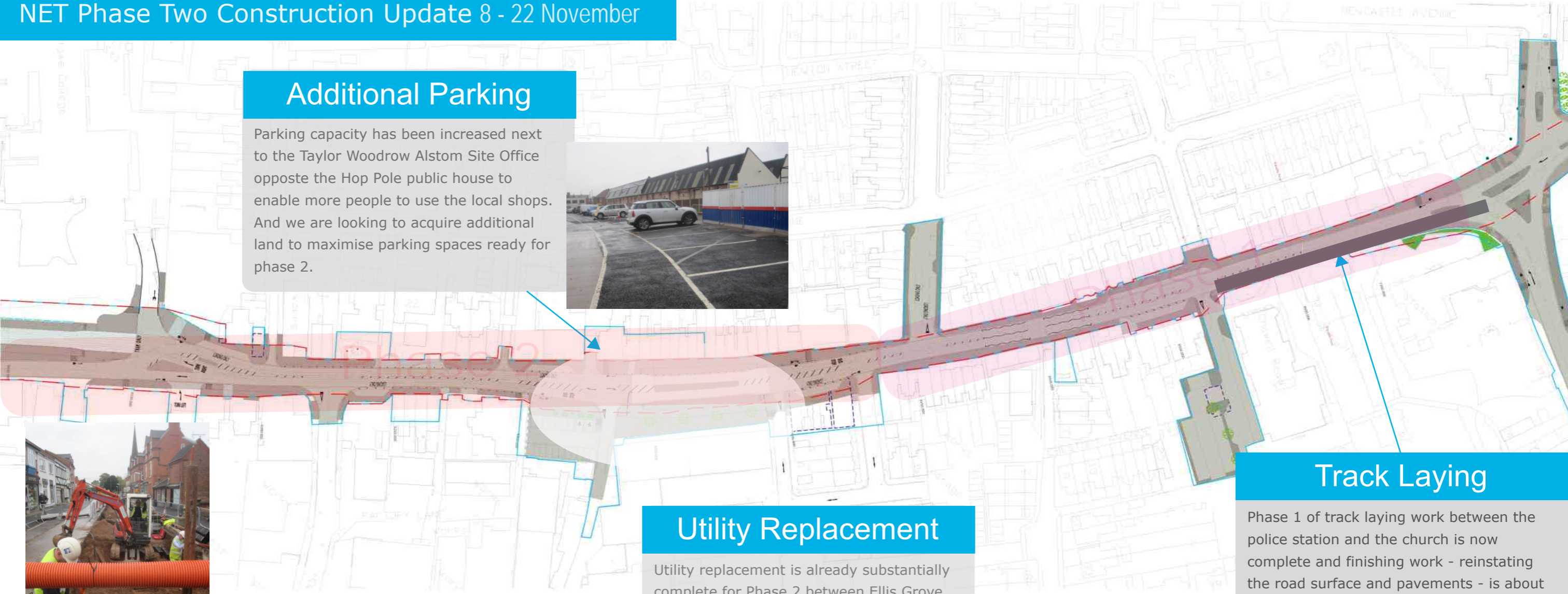
Chilwell Road



NET Phase Two Construction Update 8 - 22 November

Additional Parking

Parking capacity has been increased next to the Taylor Woodrow Alstom Site Office opposite the Hop Pole public house to enable more people to use the local shops. And we are looking to acquire additional land to maximise parking spaces ready for phase 2.



Track Laying

Phase 1 of track laying work between the police station and the church is now complete and finishing work - reinstating the road surface and pavements - is about to start. Once complete the inbound line can begin on the other side of the road. Excavation between the Church and Ellis Grove is also nearing completion allowing track work to begin in the next few weeks.



Utility Replacement

Utility replacement is already substantially complete for Phase 2 between Ellis Grove and Holly Lane.

New Virgin Media cabling has been installed and the laying of replacement gas and water pipes, and electricity cabling, will begin shortly. A new kerb line will significantly increase the pavement area and will mean much less disruption for local shops.



Road Closure

We have listened to the concerns of residents along Park Road and Grove Avenue and deployed additional traffic restrictions. This has discouraged motorists from using these roads as a dangerous cut-through.